



ASSA ABLOY

Experience a safer
and more open world

SURFACE CLOSERS

DOOR CLOSER

CATALOG

INTRODUCTION

The 410 Series Cast Iron Door Closers provide an attractive retrofit solution for retail, office, government and other commercial facilities. Heavy-duty and hold open arms, along with adjustable spring size, backcheck, closing and latch speed, provide a flexible and economical closer that you can trust. The 410 Series is certified to ANSI/BHMA Grade 1 requirements for long life and reliability, and offers a 10 year warranty.






410 SERIES DOOR CLOSER

FEATURES

- Adjustable spring sizes 1–6
- Cast iron closer body
- Standard and heavy-duty arms available as hold open or non-hold open
- Adjustments for backcheck, closing and latch speed
- Tri-packed for regular, parallel or top jamb installation
- Sleeve nuts and bolts provided with each closer
- Retrofit for LCN 4040XP
- Non-handed
- Plastic cover
- Delayed Action (optional)
- 10 year warranty

CERTIFICATIONS

- Certified for ANSI/BHMA A156.4 Grade 1 
- 90 minute positive pressure fire rating per UL10c and CAN / ULC S104 
- Meets requirements for Americans with Disabilities Act (ADA) and ANSI/BHMA A117.1 

CAUTION: Door Closers for Low Opening Force Applications:

Door closers installed in openings required to meet the requirements of the Americans With Disabilities Act or ANSI/BHMA Standard A117.1, when adjusted to meet those requirements, may not provide adequate closing power to dependably close and latch the door based on opening or site conditions.

APPLICATIONS

Standard Arms



TPN arm shown (regular mounting)

- Pull-side application
- Closer mounted on the door



TPN arm shown (top jamb mounting)

- Push-side application
- Closer mounted on the frame
- Minimum top rail = 2-1/4" (57mm)
- Maximum frame reveal = 2-3/4" (70mm)



TPN arm shown (parallel mounting)

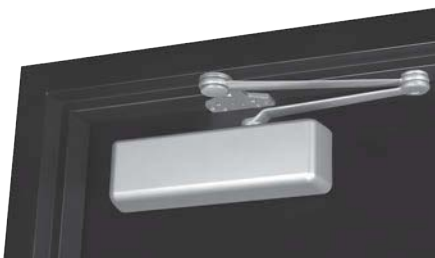
- Push-side application
- Closer mounted on the door

Heavy Duty Arms



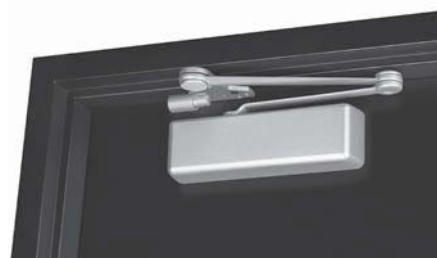
HDH arm (with stop) shown

- Push-side application
- Heavy-duty arm
- Stop is removable



HDN arm (without stop) shown

- Push-side application
- Heavy-duty arm
- Stop is removable



CPS arm shown

- Push-side application
- Heavy-duty arm
- Buffer spring provides greater protection at the end of door opening cycle
- Spring is removable

NOTE: Arms are not interchangeable with Norton Rixson premium door closers.

410 SERIES DOOR CLOSER

MODEL/PART NUMBERS

Model #	Description
410xTPN	Non-Hold Open, Tri-Packed
410DAxTPN	Non-Hold Open, Delayed Action, Tri-Packed
410xTPH	Hold Open, Tri-Packed
410xHDN	Heavy-Duty, Non-Hold Open with Removable Stop
410xHDH	Heavy-Duty, Hold Open with Removable Stop
410xCPS	Heavy-Duty, Non-Hold Open with Removable Stop and Spring Buffer
410xCPST	Heavy-Duty, Hold Open with Removable Stop and Spring Buffer



MISCELLANEOUS PARTS*

Part Number	Description
410COV	Cover
SP410	Screw Pack
2730KIT	CPS Kit

*Specify finish when ordering



CPS Kit

COVER DIMENSIONS

Cover Dimensions		
Width	Length	Projection
3-1/2" (89mm)	12-1/4" (311mm)	2-1/4" (57mm)



410 SERIES

OPTIONAL FASTENERS

Part Number	Description
SN-134	Sex Nuts
TBGN134-47	Through-Bolts & Grommet Nuts

Note: Sex nuts furnished standard with all models.

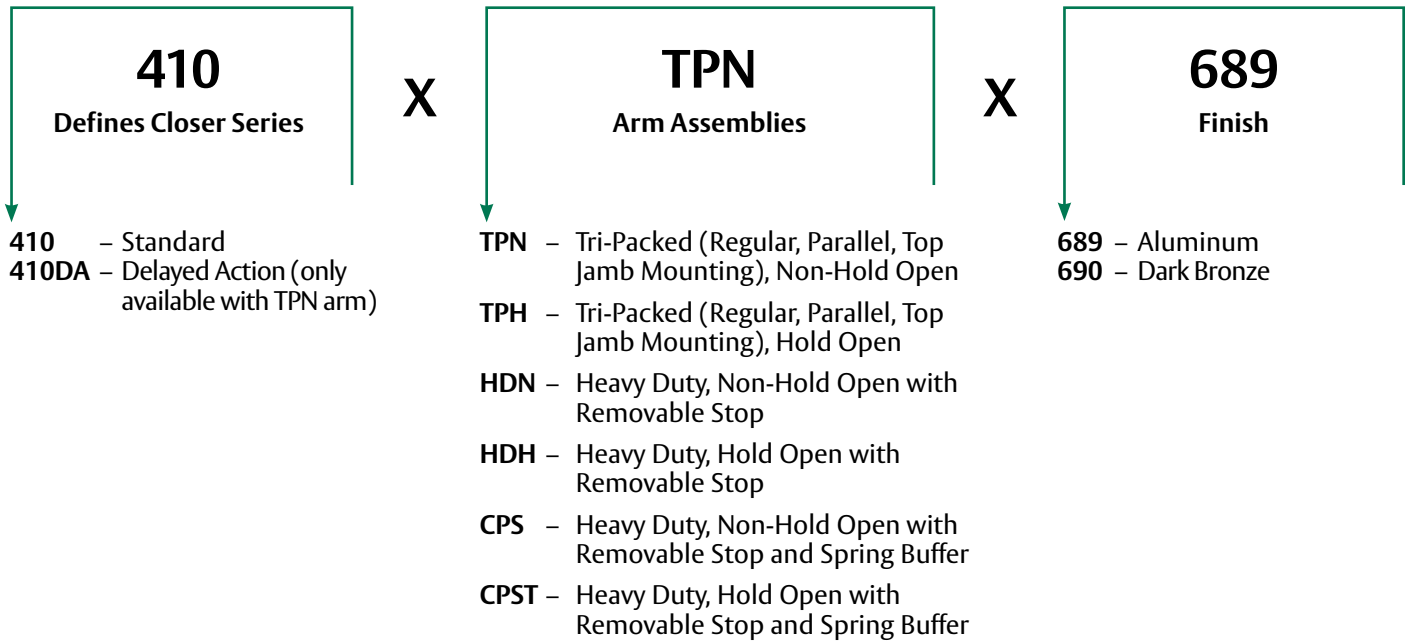
ACCESSORIES

Closer Mounting Plates	
	<p>410RDP Narrow Frame Drop Plate (regular arm): Required for hinge side mount where top rail is less than 3-3/4" (95mm). Plate requires 2" (51mm) minimum top rail.</p>
	<p>410PDP Narrow Top Rail Drop Plate (parallel arm): Required for parallel arm mounting where top rail is less than 5-1/2" (140mm), measured from the stop. Plate requires 2" (51mm) minimum top rail.</p>

410 SERIES

410 SERIES DOOR CLOSER

HOW TO ORDER



410 SERIES

Note:

- Before installing a door closer, verify the accessibility, fire, and life-safety requirements that are in effect. This includes the mounting height and projection into the clear opening. Check the adopted state and local building codes and consult the Authority Having Jurisdiction (AHJ)
- To maintain the warranty and ensure proper operation of the product, follow the installation instructions & templates and install on the inside of the building.
- Consult NFPA 80 for the hinge requirements on a fire door.
- Failure to use fasteners supplied with closer may void factory warranty.
- Optional fasteners are available for a variety of applications. Consult the door and frame manufacturer to ensure the proper fasteners are used to maintain certifications.
- Sizing charts are based on 1-3/4" x 7' standard weight doors swinging to 110°. Other application conditions (e.g. larger door heights or weight) may require larger size closer. Adjusting the spring power to meet the low opening force requirements of the Americans With Disabilities Act or ANSI/BHMA Standard A117.1, may not provide adequate closing power to dependably close and latch the door in some conditions (i.e. air movement from wind gusts or building stack pressure).